

Malignant tumors

Case 1:

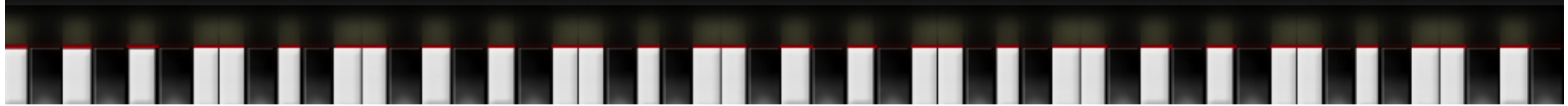


- # What are the radiographic signs of malignancy in this periapical radiograph.
- # Give your impression.

Case 2:

- # 31 year old male was referred to Oral Surgery for evaluation and management of a lesion of left mandible.
- # What are the pertinent findings and give your impression.

Case 2:



Case 3:



- # Describe the radiographic appearance of the lesion.
- # What categories can be considered for this case?

Case 4:



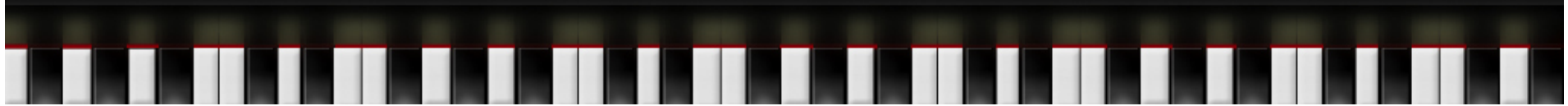
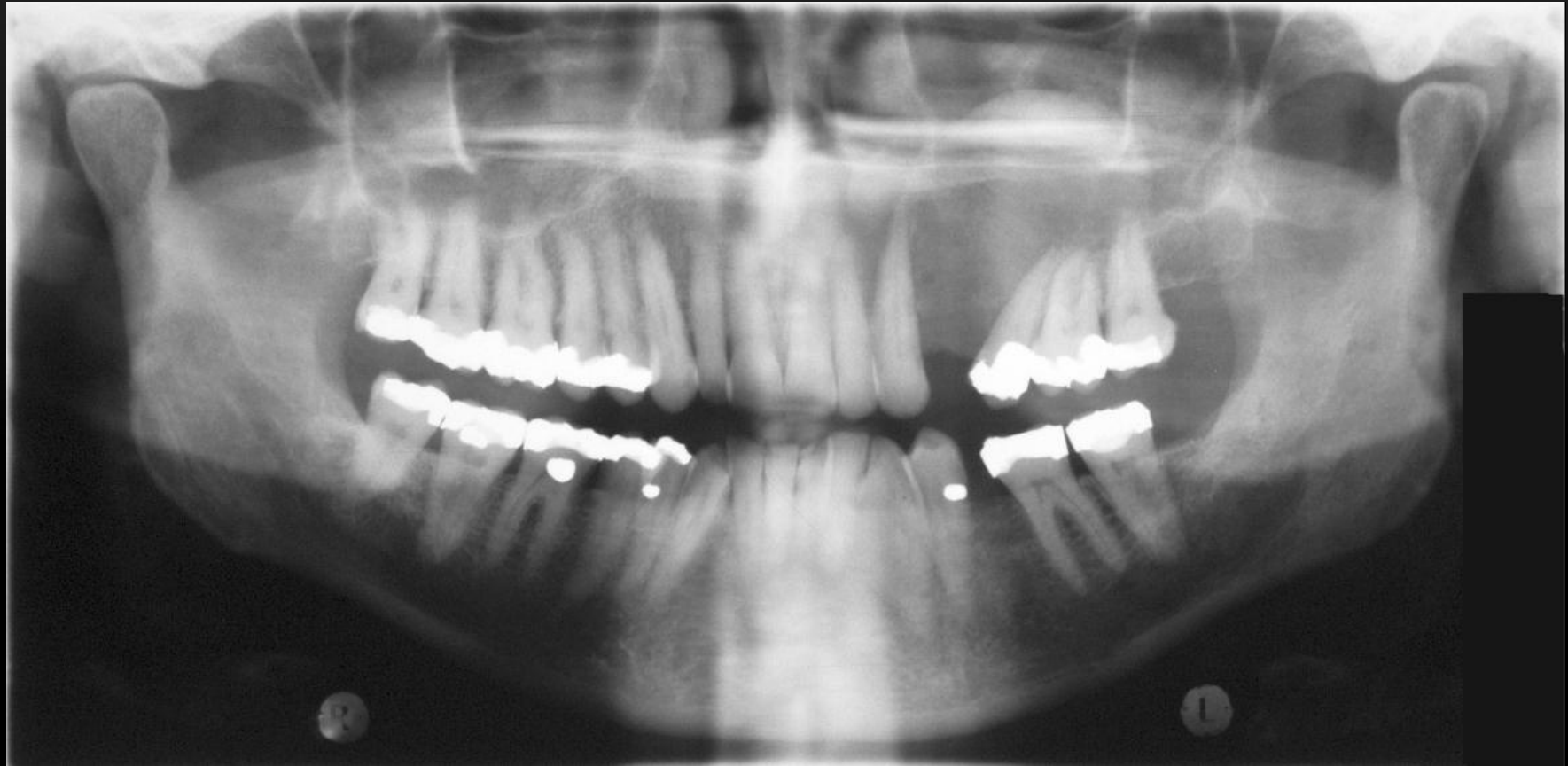
Describe the radiographic findings of interest in this panoramic image.

What is your impression?

Case 5:

- # 61 year old male patient presented with a complaint of a dull ache and swelling in his left maxillary premolar region for past four weeks.
- # What are your radiographic findings and impression?

Case 5:



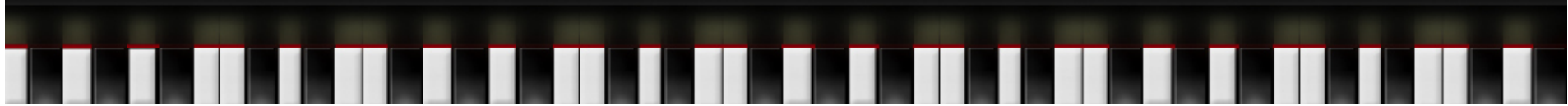
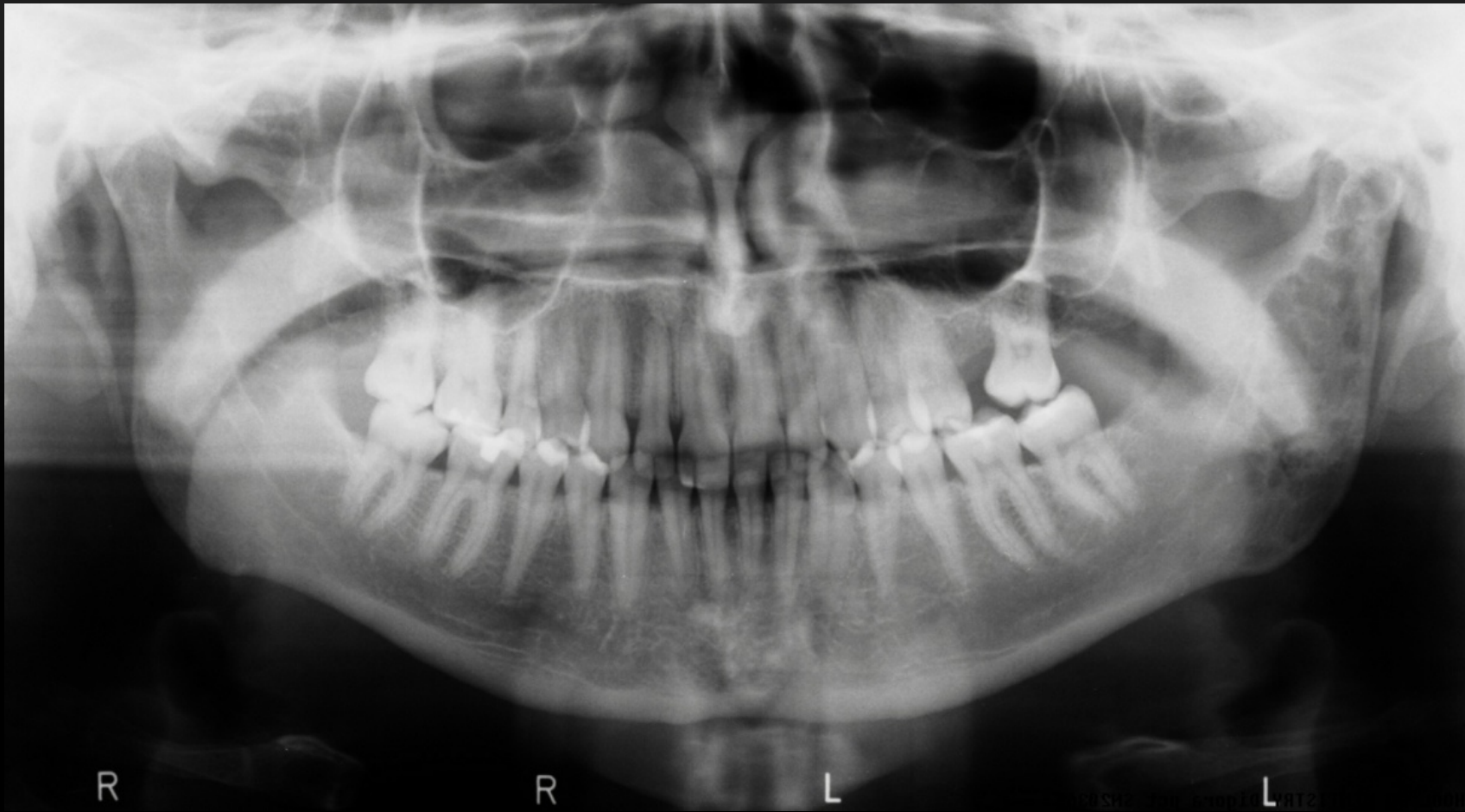
Case 6:

- # A 68 year old female patient presented with pain and numbness of the right side of her face for three or four weeks. The pain and numbness remained after a course of antibiotics.
- # What are the radiographic findings and give your impression.

Case 6:

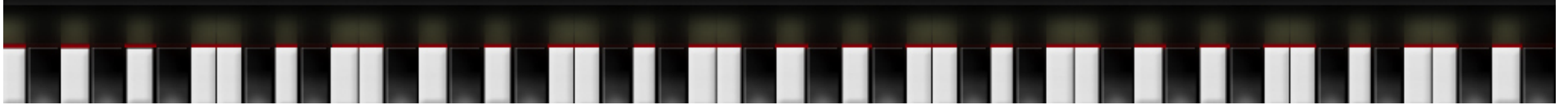


Case 7:



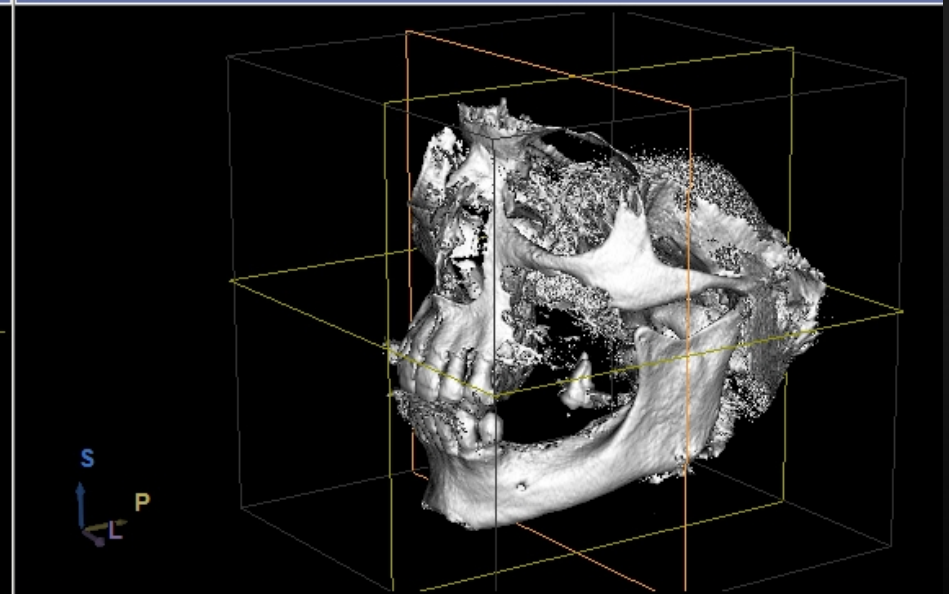
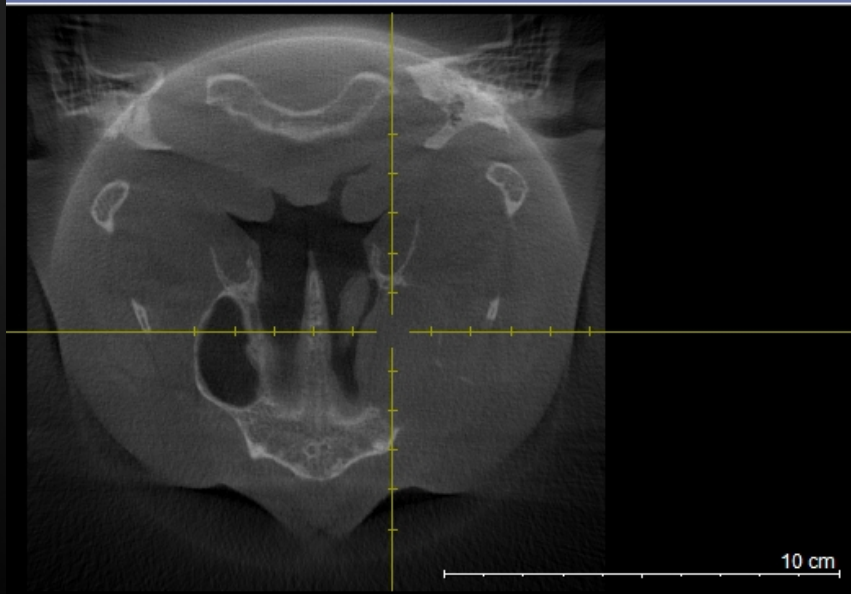
- # What are the radiographic findings in this panoramic image?
- # Give your differential for this case.

Case 8:

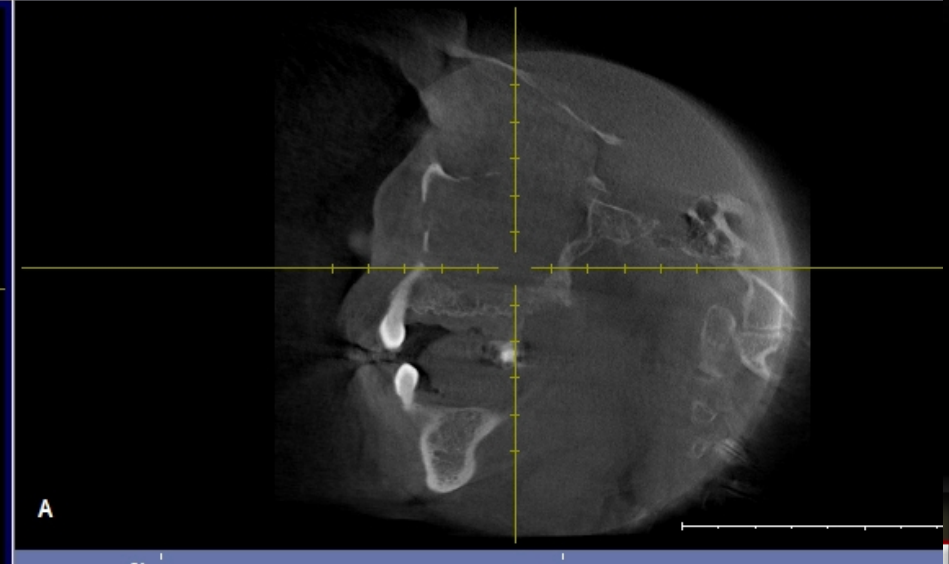
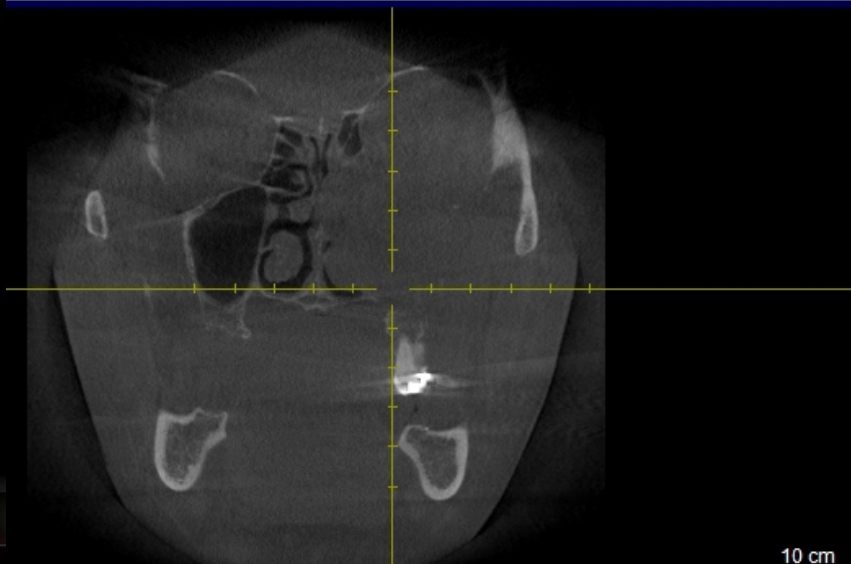


- # What are the radiographic signs consistent with a lesion in this panoramic radiograph.
- # What is your impression?

Case 9:



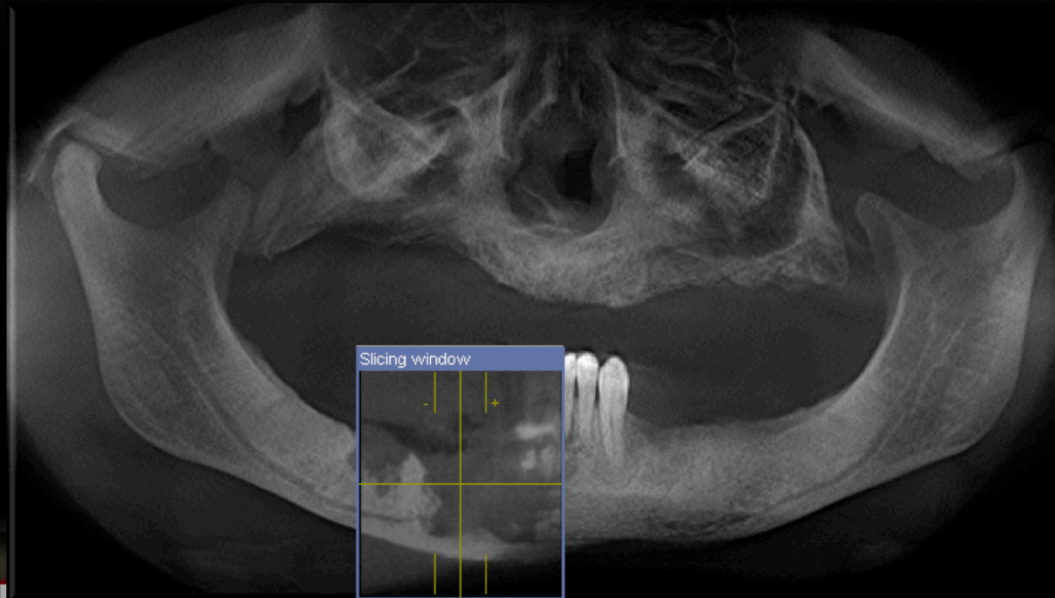
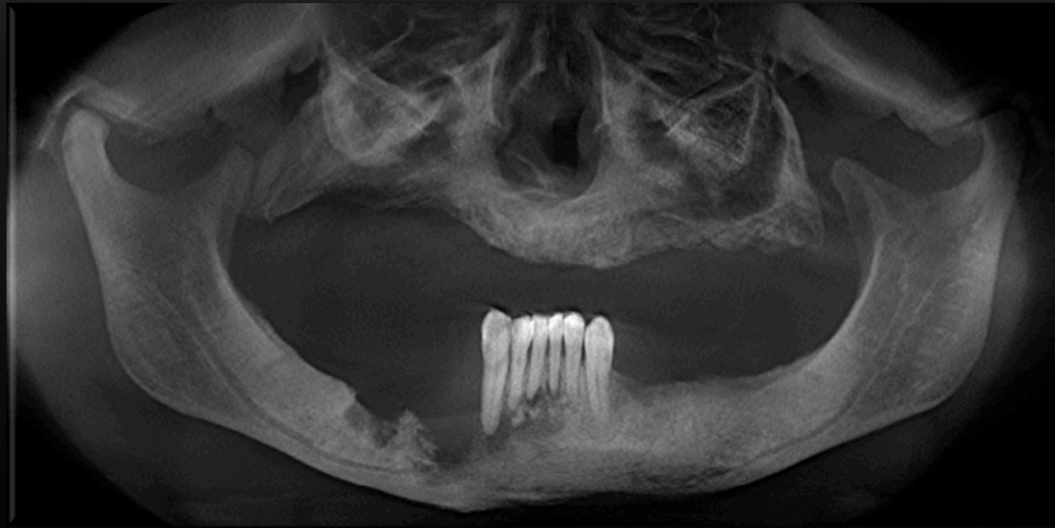
Oblique - Sagittal

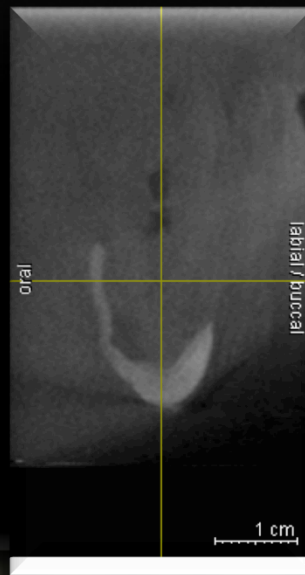
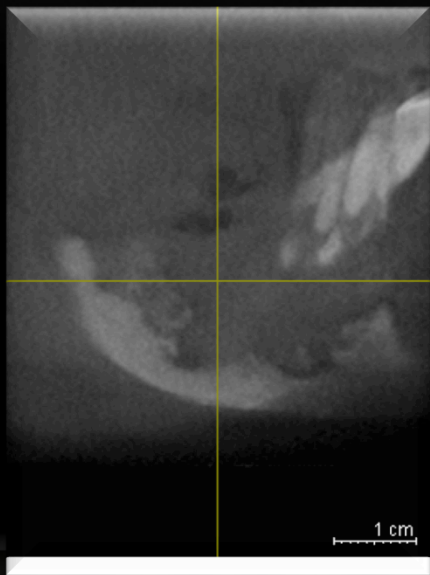
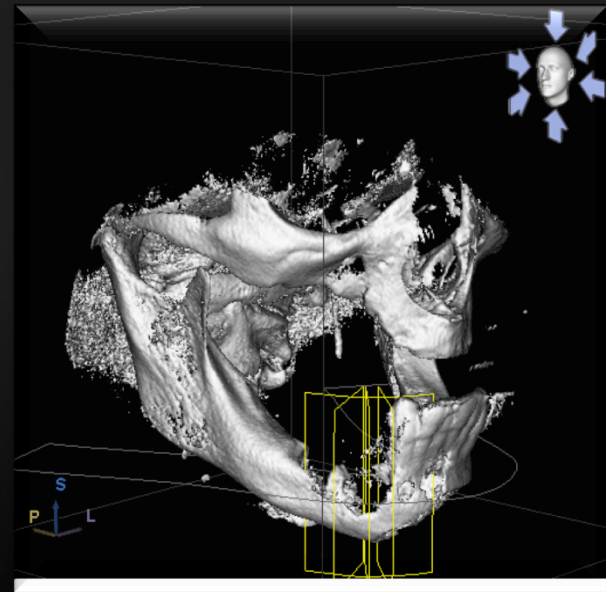
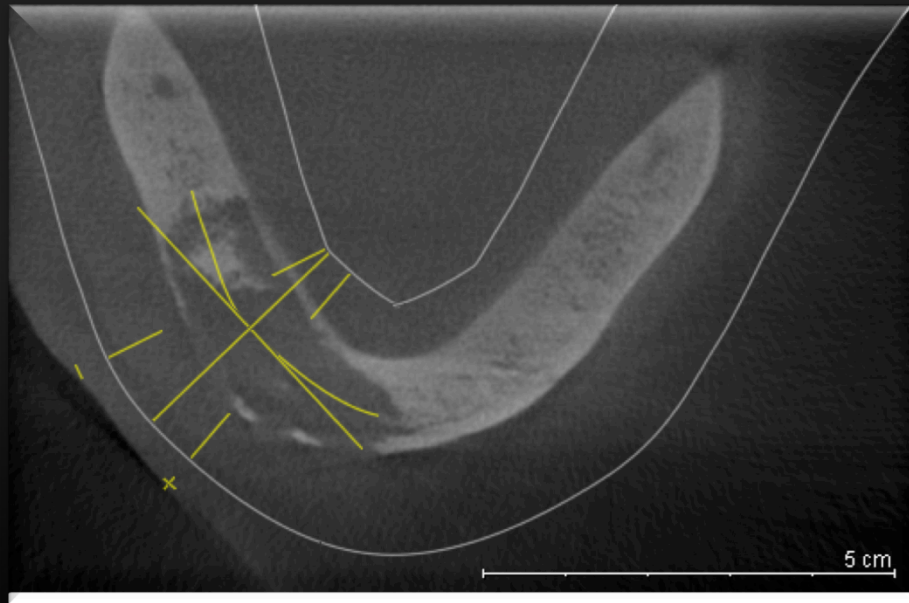


Identify the radiographic modality.

Describe the radiographic findings and give your differential.

Case 10 :





Identify the radiographic modality.

What are the radiographic signs of interest in these images. Give your impression.

Thanks 😊

